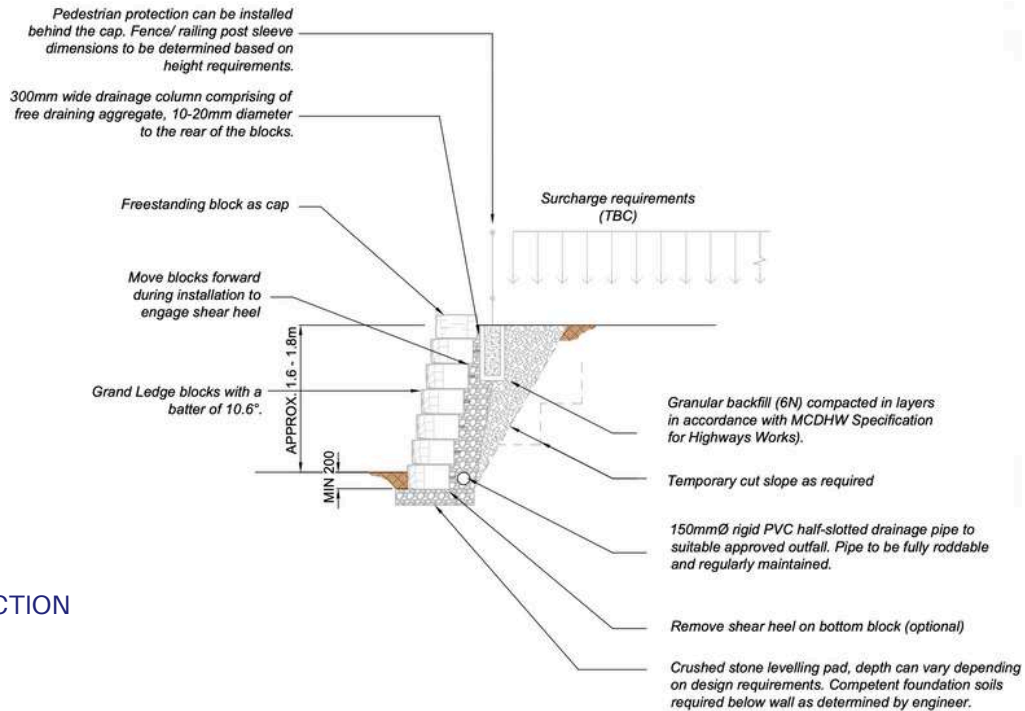


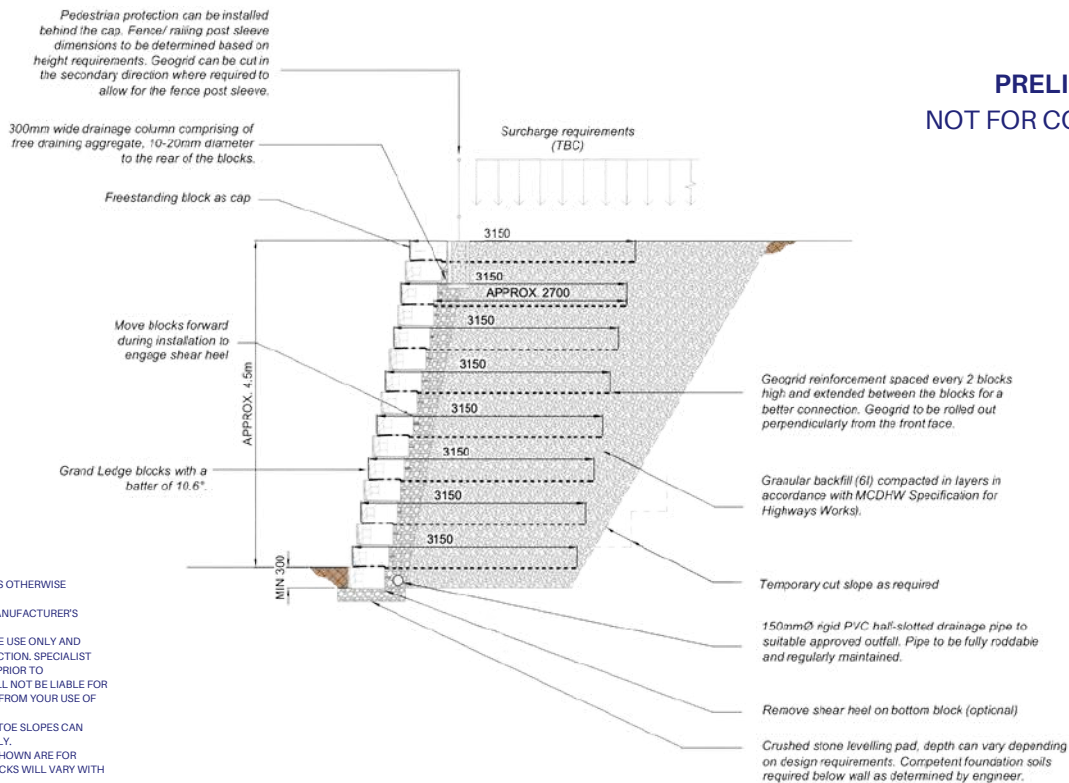
TYPICAL GRAVITY WALL SECTION 1:40

For reference only. Refer to Grand Ledge Installation Manual for detailed instructions. Final designs must be prepared by a professional engineer.



PRELIMINARY
NOT FOR CONSTRUCTION

TYPICAL REINFORCED WALL SECTION (GENERALLY 4 FT. AND TALLER)



PRELIMINARY
NOT FOR CONSTRUCTION

1) ALL DIMENSIONS IN mm's UNLESS OTHERWISE SPECIFIED
 2) FOR INSTALLATION REFER TO MANUFACTURER'S INSTALLATION GUIDE
 3) THIS DRAWING IS FOR INDICATIVE USE ONLY AND MUST NOT BE USED FOR CONSTRUCTION. SPECIALIST DESIGN ADVICE MUST BE SOUGHT PRIOR TO CONSTRUCTION. GEOMAN LTD. WILL NOT BE LIABLE FOR ANY LOSS OR DAMAGE RESULTING FROM YOUR USE OF OR RELIANCE ON THIS DRAWING.
 4) GROUND CONDITIONS & CREST/ TOE SLOPES CAN CHANGE THE DESIGN SIGNIFICANTLY.
 5) BLOCK SIZES AND PLACEMENT SHOWN ARE FOR REFERENCE ONLY. INDIVIDUAL BLOCKS WILL VARY WITH PLACEMENT PATTERN.